

FreeSWITCH-CN第二届开发者沙龙

FreeSWITCH-CN

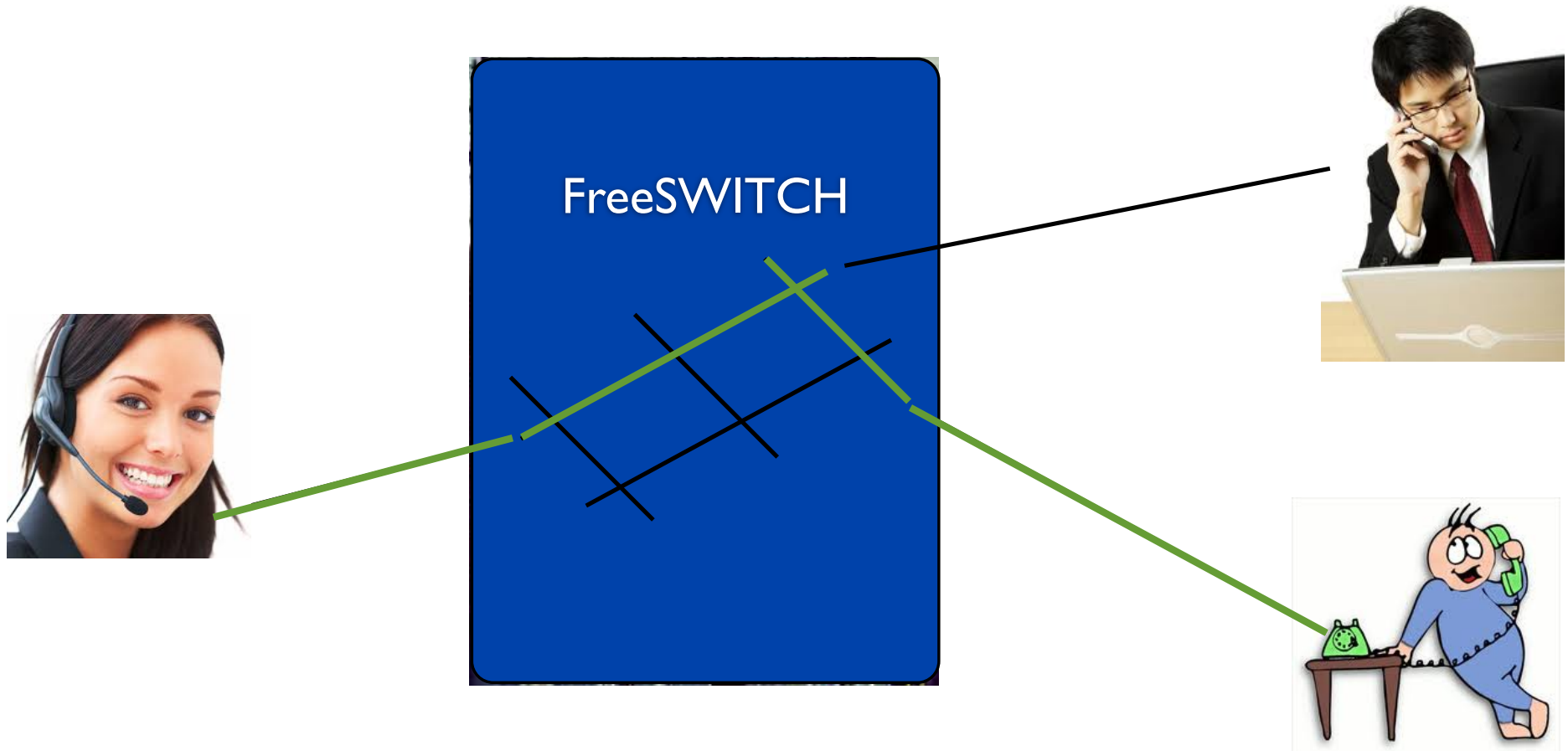
www.FreeSWITCH.org.cn

什么是FreeSWITCH?

- 世界上第一个 First
- 跨平台 Cross-Platform
- 可伸缩 Scalable
- 免费 Free
- 多协议 Multi-Protocol
- 软交换 Soft-Switch

The World's First Cross-Platform Scalable FREE Multi-Protocol Soft Switch

交换机



软交换

```
/* the main application entry point */
int main(int argc, char *argv[])
{
    char pid_path[PATH_MAX] = ""; /* full path to the pid file */
    char pid_buffer[32] = ""; /* pid string */
    char old_pid_buffer[32] = ""; /* pid string */
    switch_size_t pid_len, old_pid_len;
    const char *err = NULL; /* error value for return from freeswitch initialization */
#ifdef WIN32
    switch_bool_t nf = SWITCH_FALSE; /* TRUE if we are running in nofork mode */
    switch_bool_t do_wait = SWITCH_FALSE;
    char *runas_user = NULL;
    char *runas_group = NULL;
#else
    switch_bool_t win32_service = SWITCH_FALSE;
#endif
    switch_bool_t nc = SWITCH_FALSE; /* TRUE if we are running in noconsole mode */
    pid_t pid = 0;
    int i, x;
    char *opts;
    char opts_str[1024] = "";
    char *local_argv[1024] = { 0 };
    int local_argc = argc;
    char *arg_argv[128] = { 0 };
    int alt_dirs = 0, log_set = 0, run_set = 0, do_kill = 0;
    int priority = 0;
#ifdef __sun
    switch_core_flag_t flags = SCF_USE_SQL;
#else
    switch_core_flag_t flags = SCF_USE_AUTO_NAT | SCF_USE_NAT_MAPPING | SCF_CALIBRATE_CLOCK | SCF_USE_NAT;
#endif
    int ret = 0;
    switch_status_t destroy_status;
    switch_file_t *fd;
    switch_memory_pool_t *pool = NULL;
#ifdef HAVE_SETRLIMIT
    switch_bool_t waste = SWITCH_FALSE;
#endif
    for (x = 0; x < argc; x++) {
        local_argv[x] = argv[x];
    }
    if ((opts = getenv("FREESWITCH_OPTS")) != NULL) {
        strncpy(opts_str, opts, 1024);
        i = switch_separate_opts(opts_str, local_argv, local_argc);
        for (x = 0; x < i; x++) {
            local_argv[x] = local_argv[x];
        }
    }
    if (local_argv[0] && strcmp(local_argv[0], "nc") == 0) {
        nc = SWITCH_TRUE;
    }
    for (x = 1; x < local_argc; x++) {
        if (switch_strlen_zero(local_argv[x])) {
            continue;
        }
        if (!strcmp(local_argv[x], "win32-service")) {
            win32_service = SWITCH_TRUE;
        }
        if (!strcmp(local_argv[x], "noconsole")) {
            nc = SWITCH_TRUE;
        }
        if (!strcmp(local_argv[x], "nofork")) {
            nf = SWITCH_TRUE;
        }
        if (!strcmp(local_argv[x], "do-wait")) {
            do_wait = SWITCH_TRUE;
        }
        if (!strcmp(local_argv[x], "runas-user")) {
            runas_user = local_argv[x + 1];
            x++;
        }
        if (!strcmp(local_argv[x], "runas-group")) {
            runas_group = local_argv[x + 1];
            x++;
        }
        if (!strcmp(local_argv[x], "priority")) {
            priority = atoi(local_argv[x + 1]);
            x++;
        }
        if (!strcmp(local_argv[x], "alt-dirs")) {
            alt_dirs = 1;
        }
        if (!strcmp(local_argv[x], "log-set")) {
            log_set = 1;
        }
        if (!strcmp(local_argv[x], "run-set")) {
            run_set = 1;
        }
        if (!strcmp(local_argv[x], "do-kill")) {
            do_kill = 1;
        }
    }
    if (win32_service) {
        switch_core_flag_t flags = SCF_USE_SQL;
    } else if (nc) {
        switch_core_flag_t flags = SCF_USE_AUTO_NAT | SCF_USE_NAT_MAPPING | SCF_CALIBRATE_CLOCK | SCF_USE_NAT;
    }
    ret = switch_core_init(argc, argv, local_argv, local_argc, &pid_path, &pid_buffer, &old_pid_buffer, &pid_len, &old_pid_len, &err, nf, do_wait, runas_user, runas_group, priority, alt_dirs, log_set, run_set, do_kill, waste);
    if (ret != 0) {
        fprintf(stderr, "switch_core_init failed: %s\n", err);
        return ret;
    }
    if (win32_service) {
        switch_core_run_win32_service(pid_path, pid_buffer, old_pid_buffer, pid_len, old_pid_len, runas_user, runas_group, priority, alt_dirs, log_set, run_set, do_kill, waste);
    } else {
        switch_core_run(pid_path, pid_buffer, old_pid_buffer, pid_len, old_pid_len, runas_user, runas_group, priority, alt_dirs, log_set, run_set, do_kill, waste);
    }
    return 0;
}
```

多协议



Enter a name or number

1	ABC	2	DEF	3	
GHI	4	JKL	5	MNO	6
PQRS	7	TUV	8	WXYZ	9
*		0		#	



多协议



SIP/H323

AVAYA

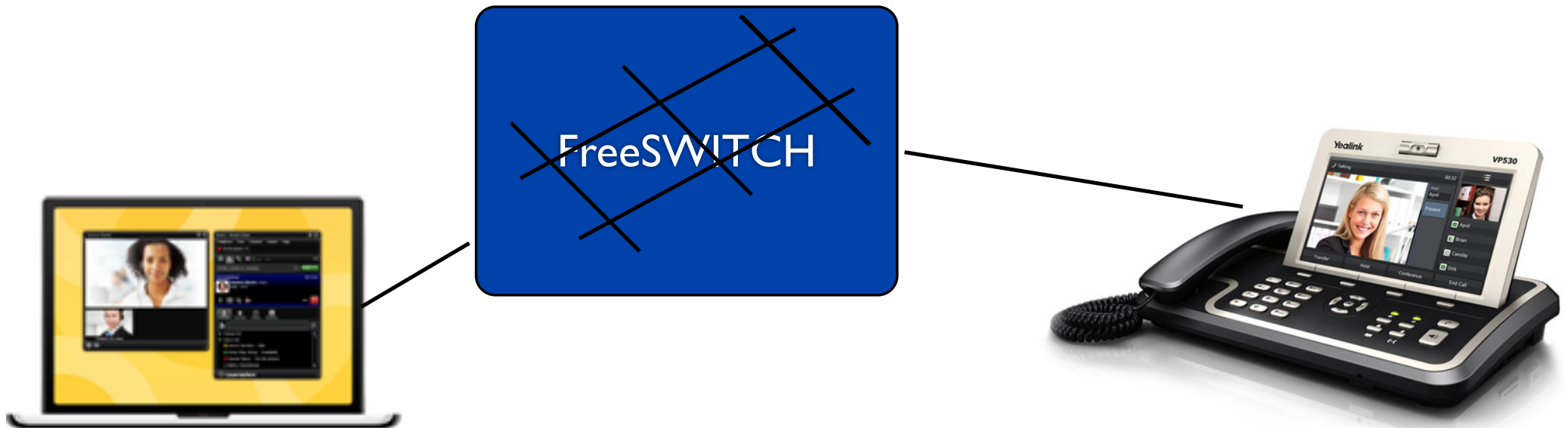


EI/TI/IMS/SBC



at&t

视频通话、会议



跨平台



Linksys NLS2



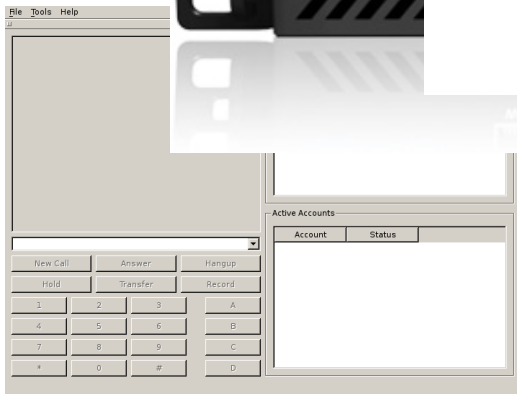
Raspberry Pi



可伸缩性强



成千上万路通话...



B2BUA

FreeSWITCH



背靠背用户代理

FreeSWITCH到底能有多强？

跟软、硬件环境和具体业务场景有关

FreeSWITCH官方对压力测试从来都不热心

不过...
好像总有人惦记着这个...

Tony(Anthony Minessale II)在2011 ClueCon上
展示了FreeSWITCH运行着1000cps共3万个并发



[Freeswitch-users]

lists.freeswitch.org

[Freeswitch-users]

Ken Rice [krice at freeswitch.org](mailto:krice@freeswitch.org)
Thu Jul 26 09:19:13 MSD 2011

- Previous message: [\[Freeswitch-users\]](#)
- Next message: [\[Freeswitch-users\]](#)
- Messages sorted by: [\[date\]](#)

Tony demonstrated FreeSWITCH running 1000cps 30sec call duration with media for a total of 30K concurrent calls @ ClueCon last year (just a few weeks shy of a year ago)

That being said, does that mean you need to choose Linux over Windows? No it does, use the the tools that fit your specific deployment requirements... For some people that means Windows, for others that means Linux or BSD or

同时，他也说过：
“Don't try this at home!”

FreeSWITCH能做什么？

- ★ PBX
 - ★ 话务路由服务器
 - ★ 语音编码转换服务器(B2BUA)
 - ★ IVR 及语音服务器
 - ★ 语音和视频会议服务器
 - ★ 语音信箱
 - ★ 会话边界控制器(SBC)
 - ★ 传真服务器
 - ★ 可用作 T.38 网关,或直接收发传真
 - ★ T.30 到 T.38 或 T.38 到 T.30 网关
 - ★ Call Center - 呼叫中心
 - ★ 语音识别 (ASR) 及语音合成 (TTS) 系统对接
 - ★ Flash RTMP-SIP/PSTN 媒体网关 - 通过 Flash 客户端实现与 SIP 平台用户的语音、视频通讯及文字交谈能力
- ★ ACD - 高级呼叫分配
 - ★ onhook/offhook坐席
 - ★ CTI - 计算机电话集成接口
 - ★ 录音、录像服务器
 - ★ 指挥调度系统平台
 - ★ 视频监控
 - ★ 电信运营 - 400/800 综合业务平台
 - ★ 企业总机
 - ★ 托管型呼叫中心及企业呼叫中心
 - ★ 彩铃、统一通讯

FreeSWITCH简史

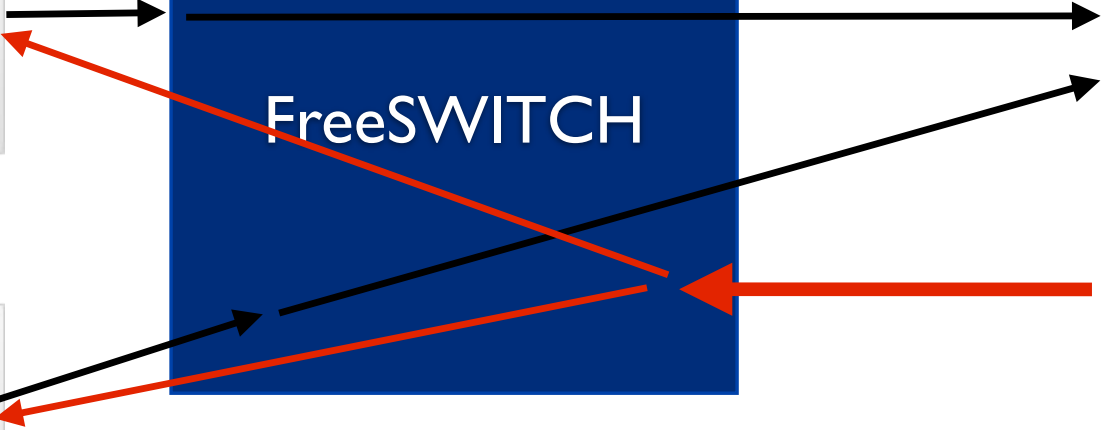
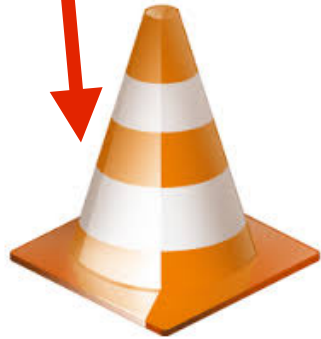
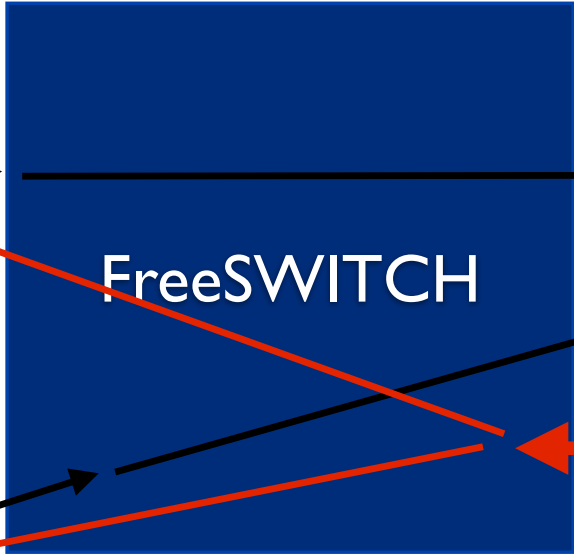
- VoIP时代兴起于世纪之交，以开源的OpenH323和Asterisk为代表
- 2002年，Anthony Minessale II 开始使用Asterisk
- 2005年，Anthony提议开发一个Asterisk 2.0分支，但未获支持
- 2006年1月，第一次O'Reilly Media's ETEL会议上宣布
- 2008年5月26日，FreeSWITCH 1.0.0版
- 2012年8月14日，发布1.2.1版
- 2013年6月，发布1.4 Beta版，支持WebRTC

Asterisk vs. FreeSWITCH



Demos

- Video Conference
- WebRTC
- FreeSWITCH-Portal





S F M P L L M G M 申 C L C F F M 私 S F Is F 电



/assets/demos/index8.html

Dial Pad

7	8	9
4	5	6
1	2	3
*	0	#

ACTIVE

SessionID: 34dc2d35-bfee-46e2-bd3e-5733a173a794

1004

呼叫 挂断 设置



ClueCon



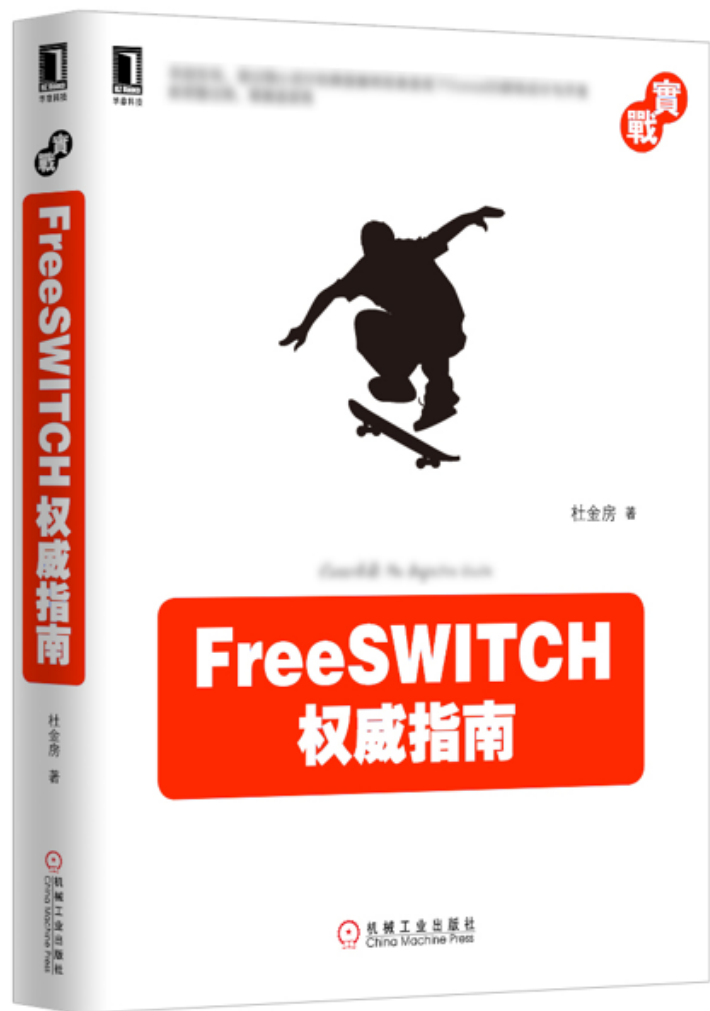
ClueCon 2012

ClueCon

- www.cluecon.com
- 一年一度的电话系统开发者会议，在美国芝加哥举行
- 主题演讲 + 线下Party

我们的社区

- www.FreeSWITCH.org.cn 成立于2009年底
- FreeSWITCH-CN QQ群(190435825) 现有成员688名
- FreeSWITCH-CN邮件列表(在Google Groups上)现有成员234名
- 《FreeSWITCH:VoIP实战》第二章发布于2010年4月



FreeSWITCH

VoIP 实战

杜金房 著

One more thing...

招聘 VoIP开发工程师

Jobs@x-y-t.com

*Thank
You*

FreeSWITCH-CN

www.FreeSWITCH.org.cn

Seven Du